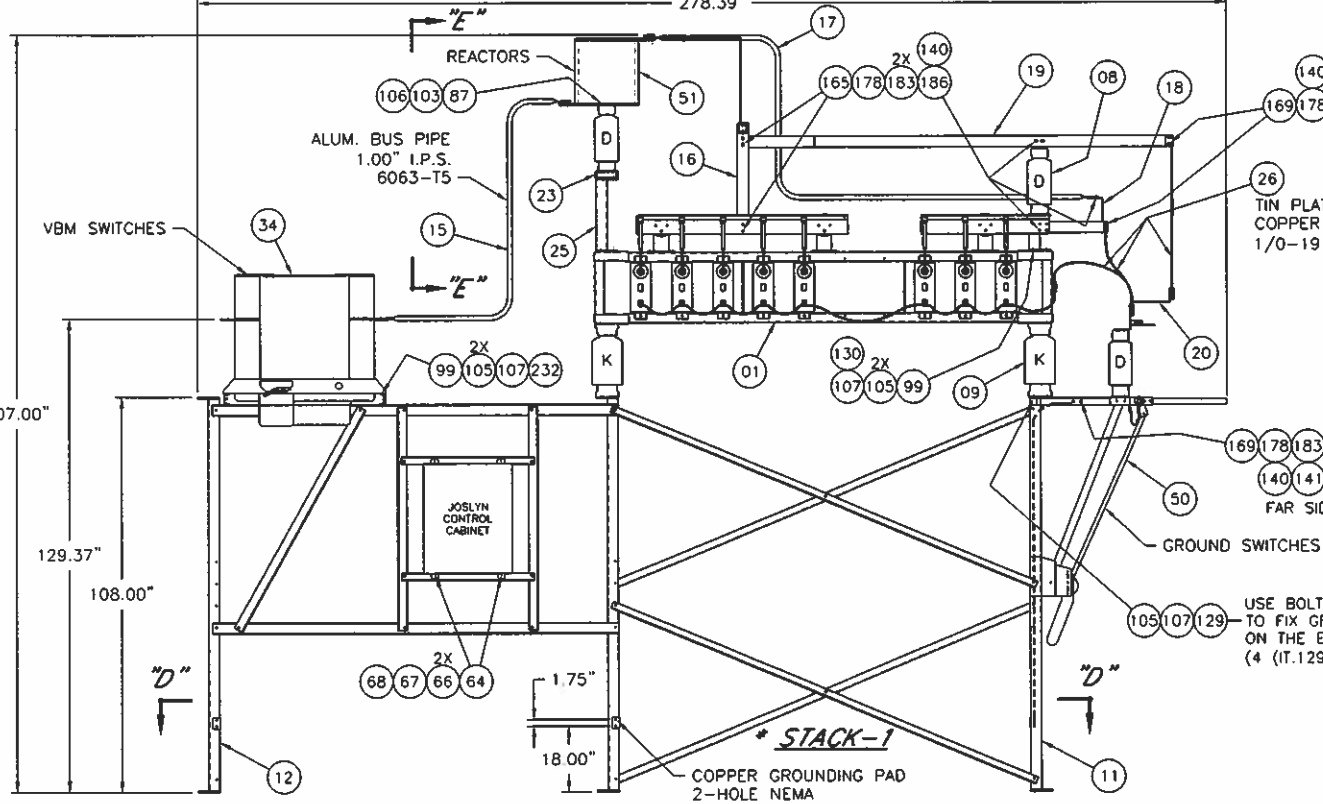
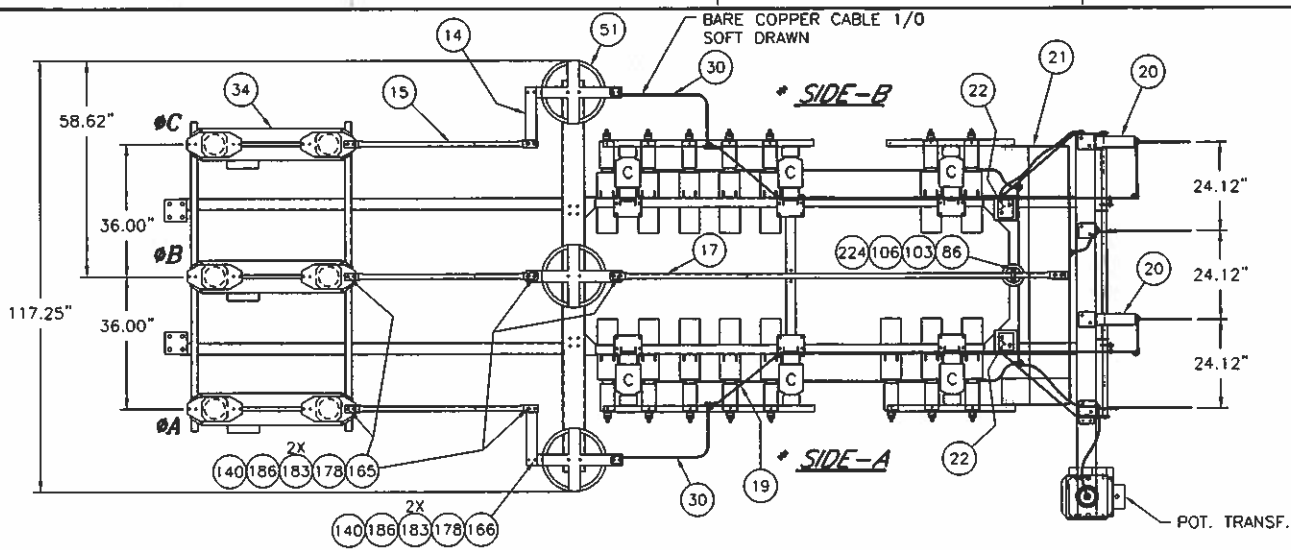
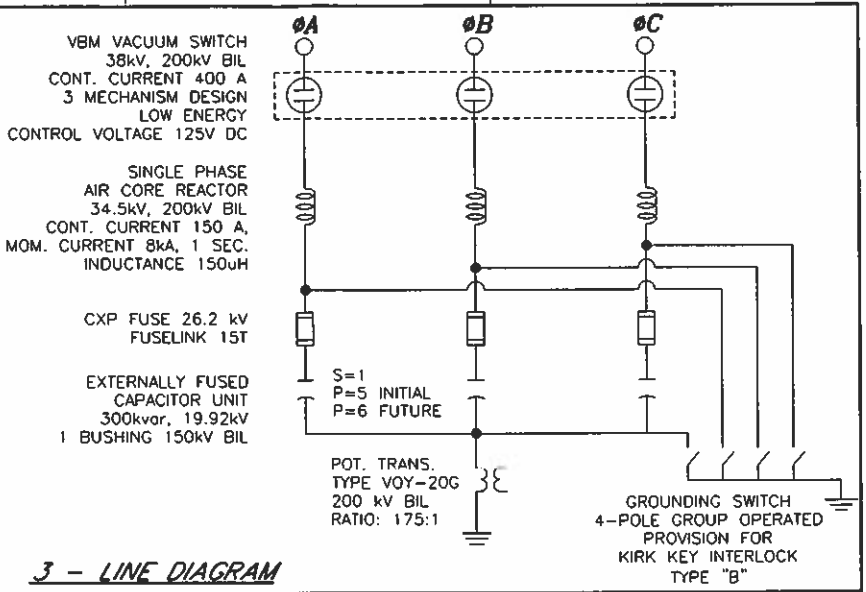


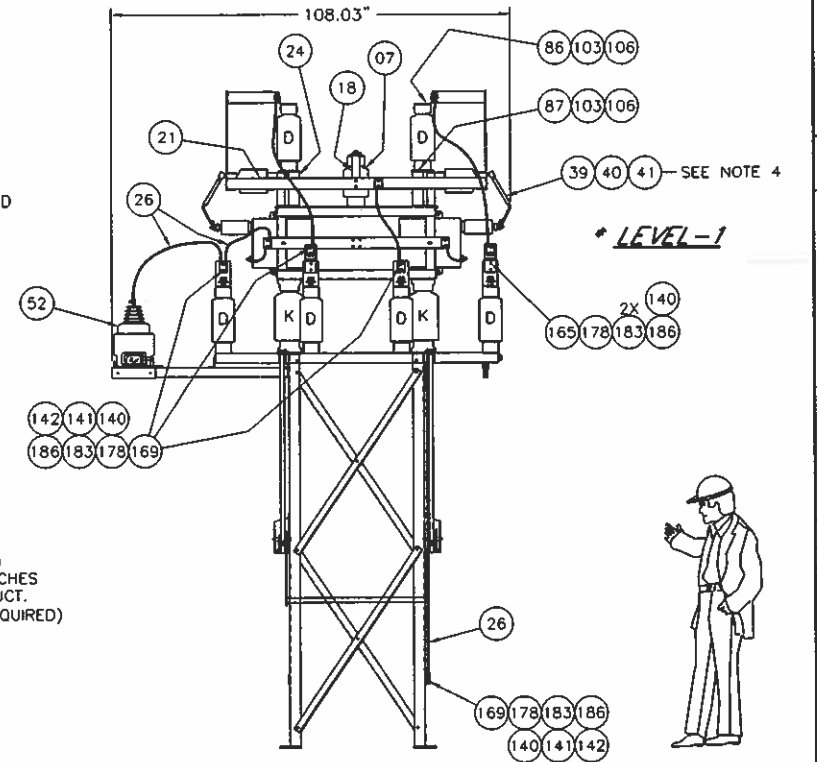
VIEW "E-E"



SECTION "D-D"
(ANCHOR BOLT PLAN)



3 - LINE DIAGRAM



LEVEL-1

	2-HOLE CLAMP CONNECTOR ELECTRICAL JOINTS
	1-HOLE CLAMP CONNECTOR ELECTRICAL JOINTS
	ELECTRICAL JOINTS
	NON-ELECTR. JOINTS
K TR-234 HS 34.5 200	
D TR-210 SS 34.5 200	
C TR-208 SS 23 150	
B TR-205 SS 15 110	
A TR-202 SS 7.5 95	
TR #	KV KV BIL
SS- STANDARD STRENGTH	
HS- HIGH STRENGTH	
ES- EXTRA HIGH STRENGTH	
POST TYPE INSULATORS	

NOTES:

- * REFERENCE FOR CAPACITOR POSITIONING CHART 2GUL303569E0010, 2GUL303569E0011, 2GUL303569E0012 AND 2GUL303569E0013 SEE INSTRUCTION MANUAL SECTION 3
- ITEM 61 & 62 (BANK NAMEPLATE & MOUNTING SCREWS) ARE SHIPPED AS LOOSE ITEMS FOR ON SITE LOCATION BY THE CUSTOMER. DRILL #27 (#0.144")
- 10% MORE HARDWARE SHIPPED ON SITE
- SEE DRAWING 2GU704-0012 AND INSTRUCTION I.L.38-851-5 FOR INSTALLATION.
- USE PENETROX (IT. 140) ON STAINLESS STEEL THREADS BETWEEN BOLT AND NUT TO AVOID GALLING.
- POT. TRANS. (IT. 52) NOT SHOWN ON ELEVATION VIEW

BASE LOADS PER LEG

TENSILE FORCE	5000 lb./l.
COMPRESSION FORCE	6900 lb./l.
SHEAR FORCE	1000 lb./l.

INSTRUCTIONS FOR MAKING ELECTRICAL JOINTS
(CONTACT SURFACE PREPARATION)

- REMOVE DIRT AND FOREIGN SUBSTANCES FROM CONTACT SURFACES.
- ABRADE THESE SURFACES WITH WIRE BRUSH OR MEDIUM EMERY CLOTH.
- COAT ALUMINUM CONTACT SURFACES THOROUGHLY WITH PENETROX #RK5109X-0001.
- ASSEMBLE JOINT WITHOUT REMOVAL OF COMPOUND. EXCESSIVE MATERIAL WILL ESCAPE AS PRESSURE IS APPLIED AND MAY BE WIPED AWAY.

GENERAL TORQUE REQUIREMENTS

NUT/BOLT SIZE	MAT'L	TORQUE (IN)	TORQUE (FT LBS)
3/8-16UNC	ST.SIL.	20-37	15-20
	CALV.	27-41	20-30
1/2-13UNC	ST.SIL.	61-86	45-65
	CALV.	88-102	50-75
5/8-11UNC	ST.SIL.	122-163	90-120
	CALV.	128-203	95-150

BUSHING HDW.: 1/2"-1 1/2" UNF. STRAD. 20-27 Nm (15-20 FT LBS)
 BUSHING HDW.: 3/8" UNF. STRAD. 27-34 Nm (20-25 FT LBS)
 WIRE FUSE HARDWARE: 20-27 Nm (15-20 FT LBS) IF REQUIRED
 ITEM 143-144: 20-27 Nm (15-20 FT LBS) IF REQUIRED
 ITEM 145-146: 20-27 Nm (15-20 FT LBS) IF REQUIRED

CUSTOMER: FPL ENERGY

CUSTOMER ORDER No.: U138241
 SUBSTATION NAME: BLUE SUMMIT WIND FARM
 APPROX. WEIGHT: 4600 lbs WITH FUT. EXPANSION.

01-08-11-20	FINAL FOR CONSTRUCTION	P.M.	D.L.	B.G.
NO. REVISIONS	LOC. DESCRIPTION	BY	CHECK	APPR.
ABB INC., CAPACITOR DIVISION, CANADA				
TITLE: CAP. BANK 4.5 Mvar, 34.5 kV, EXT. FUSED 200 kV BIL, 60 Hz., UNGND. WYE				
DRFT. P.M.	DATE: 08-08-22	TOLERANCES UNLESS OTHERWISE SPECIFIED	GENERAL ± 0.25" C/C HOLES LOCATION ± 0.13" ANGLE ± 1°	
CHECK I.H.	DATE: 08-08-27	SCALE: 1/2" = 1'-0"	REV	
APPR. V.D.	DATE: 08-08-28	NO: 2GUT303569E0010 01		

SIZE D
 NO: 2GUT303569E0010