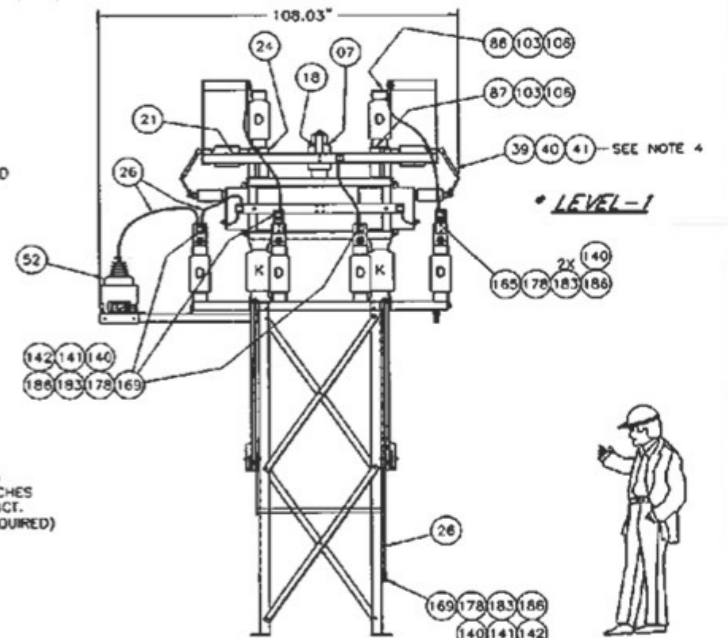
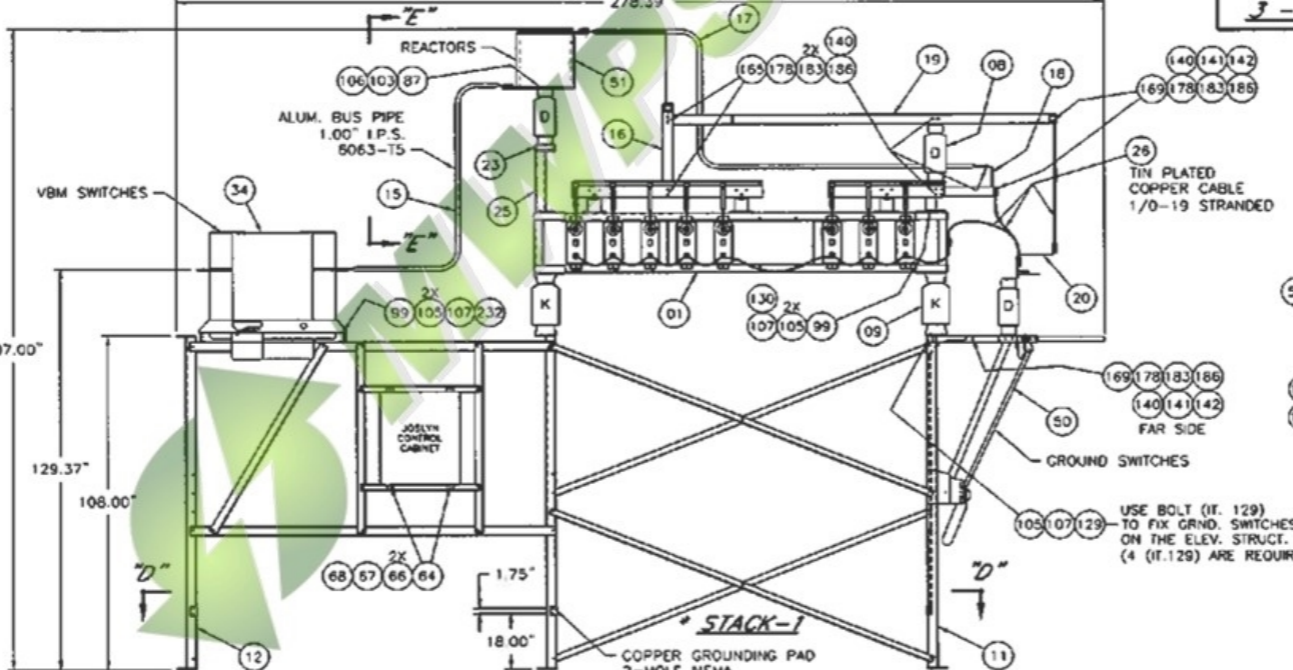
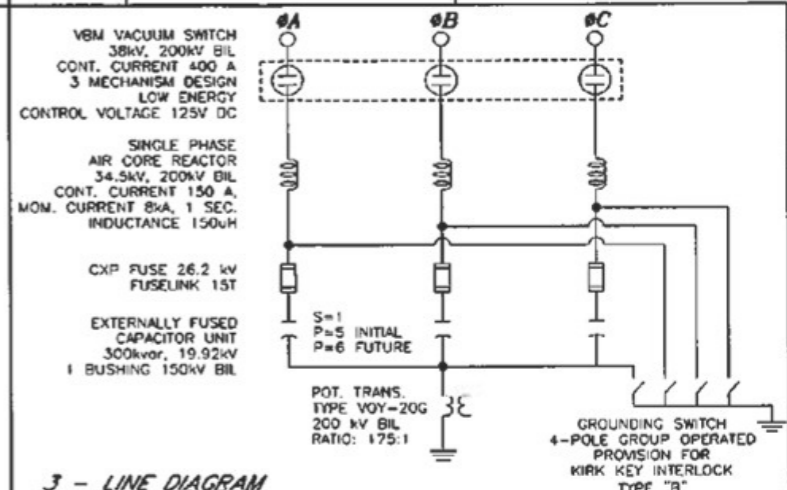
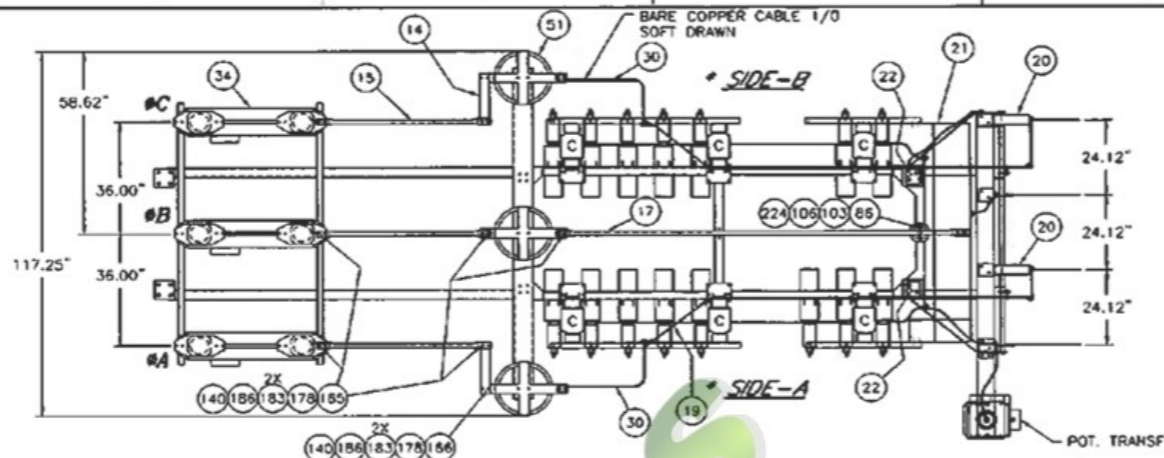
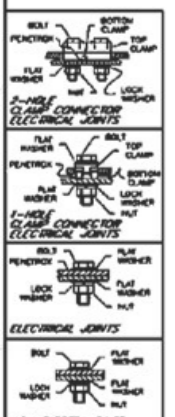


VIEW "E-E"



LEVEL-1

- NOTES:
- * REFERENCE FOR CAPACITOR POSITIONING CHART 2GUL303569E0010, 2GUL303569E0011, 2GUL303569E0012 AND 2GUL303569E0013 SEE INSTRUCTION MANUAL SECTION 3
 - ITEM 61 & 62 (BANK NAMEPLATE & MOUNTING SCREWS) ARE SHIPPED AS LOOSE ITEMS FOR ON SITE LOCATION BY THE CUSTOMER. DRILL #27 (#0.144")
 - 10% MORE HARDWARE SHIPPED ON SITE
 - SEE DRAWING 2GU704-0012 AND INSTRUCTION I.L.38-851-5 FOR INSTALLATION.
 - USE PENETROX (IT. 140) ON STAINLESS STEEL THREADS BETWEEN BOLT AND NUT TO AVOID GALLING.
 - POT. TRANS. (IT. 52) NOT SHOWN ON ELEVATION VIEW



NON-ELECTRICAL JOINTS

K	TR-254HS	34.5	200
D	TR-210	SS	34.5
C	TR-206	SS	23
B	TR-204	SS	15
A	TR-202	SS	7.5
TR #	IN	IN	IN

STANDARD STRENGTH
150% INCH STRENGTH
ELEV. & CRITICAL HEIGHT STRENGTH
POST TYP. INSULATORS

BASE LOADS PER LEG

TENSILE FORCE	5000 lb.
COMPRESSION FORCE	6900 lb.
SHEAR FORCE	1000 lb.

- INSTRUCTIONS FOR MAKING ELECTRICAL JOINTS (CONTACT SURFACE PREPARATION)
- REMOVE DIRT AND FOREIGN SUBSTANCES FROM CONTACT SURFACES.
 - ABRADE THESE SURFACES WITH WIRE BRUSH OR MEDIUM EMERY CLOTH.
 - COAT ALUMINUM CONTACT SURFACES THOROUGHLY WITH PENETROX #RK5109X-0001.
 - ASSEMBLE JOINT WITHOUT REMOVAL OF COMPOUND. EXCESSIVE MATERIAL WILL ESCAPE AS PRESSURE IS APPLIED AND MAY BE WIPED AWAY.

GENERAL TORQUE REQUIREMENTS

NUT/BOLT SIZE	MIN.	TYPICAL	MAX.
3/8-16UNC	25	35	45
1/2-13UNC	45	65	85
3/8-16UNC	25	35	45

BRUSHING FOR 1/2" LINE SIZE: 20-25 AMPS (15-20 FT LBS)
BRUSHING FOR 1" LINE SIZE: 25-30 AMPS (20-25 FT LBS)
NOTE: USE HARDENING: 20-25 AMPS (15-20 FT LBS) IF REQUIRED FROM 145-148; 20-25 AMPS (15-20 FT LBS) IF REQUIRED FROM 149-148; 20-25 AMPS (15-20 FT LBS) IF REQUIRED.

CUSTOMER: ABB INC., CAPACITOR DIVISION, CANADA

CUSTOMER ORDER NO.:

SUBSTATION NAME:

APPROX. WEIGHT: 4500 lbs WITH FUT. EXPANSION.

01 08-11-20	FINAL FOR CONSTRUCTION	P.M.	D.L.	B.G.
02 08-11-20	LOC. DESCRIPTION	BY	CHECK	APPR.
ABB INC., CAPACITOR DIVISION, CANADA				
TITLE: CAP. BANK 4.5 Mvar, 34.5 kV, EXT. FUSED 200 kV BIL, 60 Hz., UNGND. WYE				
DRFT. P.M.	DATE: 08-08-22	TOLERANCES UNLESS OTHERWISE SPECIFIED	GENERAL & 0.25" C/C HOLES LOCATOR ± 0.15" ANGLE & 1"	
CHECK I.H.	DATE: 08-08-27	SCALE: 1/2" = 1'-0"		
APPR. V.D.	DATE: 08-08-28	SITE	D	NO: 2GUT303569E0010 01

FIG. NO: 2GUT303569E0010