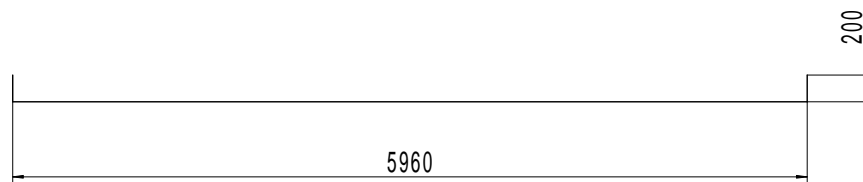
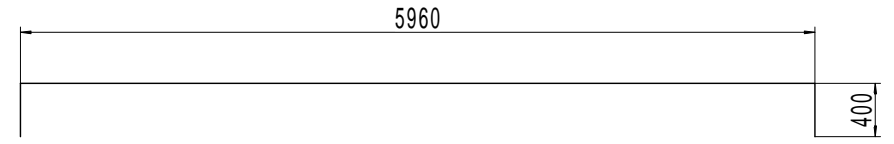


① Bottom Bar Ø20

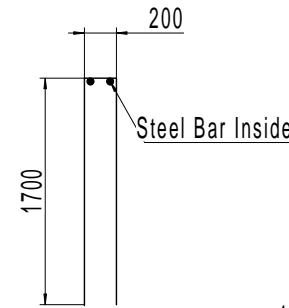


② Top Bar Ø20

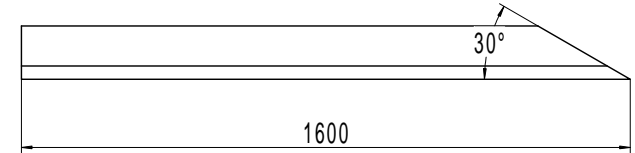
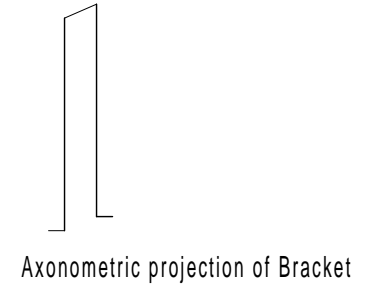


③ Steel Bar Penetrating Foundation Cylinder Ø20

Note: Bend one side of steel bar into 400 long elbow, then bend the other side after penetrating the Foundation Cylinder.



⑤ Bracket Ø20



⑥ Earthing Pole (Galvanized angle iron)

⑥	Earthing Pole	2	<50x5			Prepared by User
⑤	Bracket	80	Ø20			Prepared by User
④	Maintenance bar	11	Ø20			Prepared by User
③	Penetrate Bar	24	Ø20			Prepared by User
②	Top Bar	60	Ø20			Prepared by User
①	Bottom Bar	122	Ø20			Prepared by User
3	Threading Pipe	2	PVC			Prepared by User
2	Foundation Bearing	4	Q235			Supplier Provided
1	Foundation Cylinder	1	Q345D			Supplier Provided

Sn	Code	Name of Parts	Qty	Material	Unit	Total Weight	Remark
							RichWind New Energy
							Foundation (2)
设计	人数	分区	更改文件号	签名	年.月.日	阶段标记	重量 SCALE
审核						1:20	
工艺							共 张 第 张