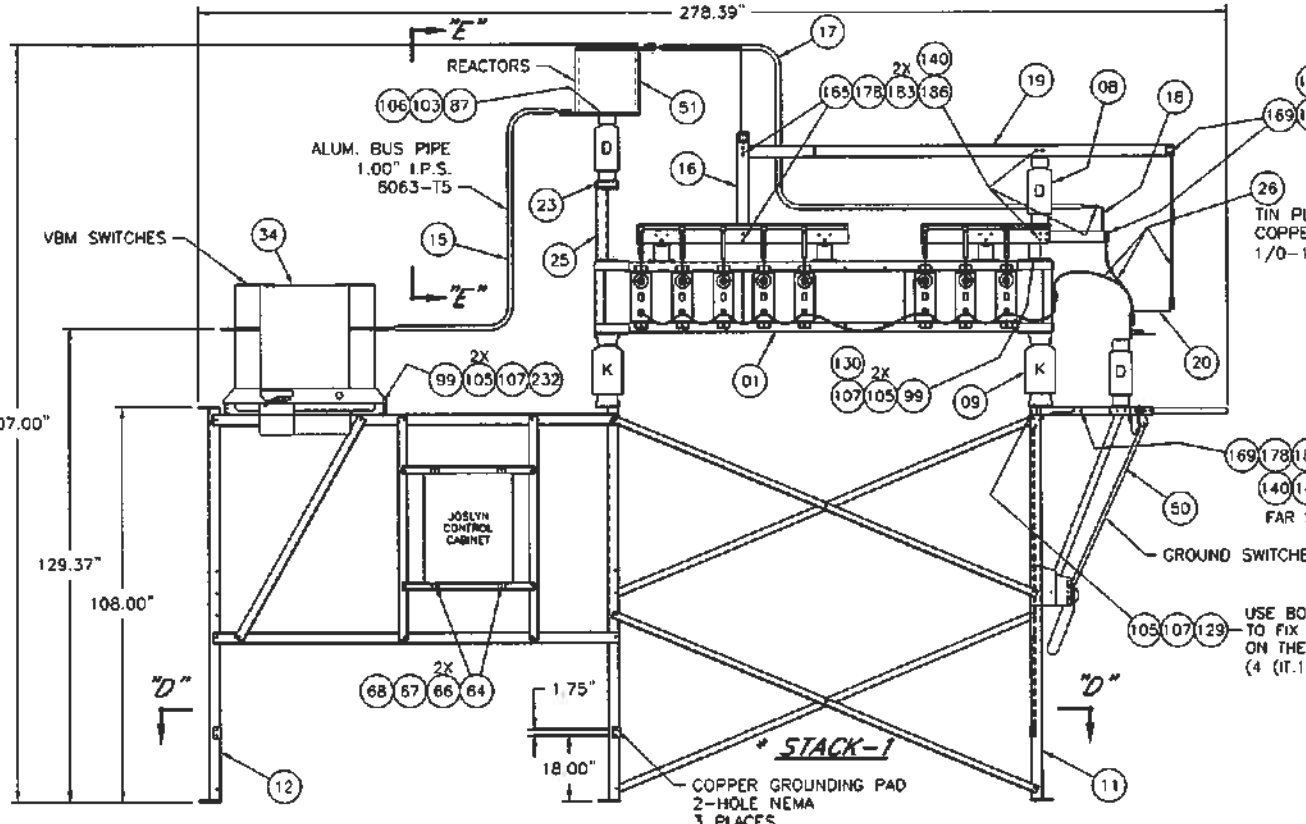
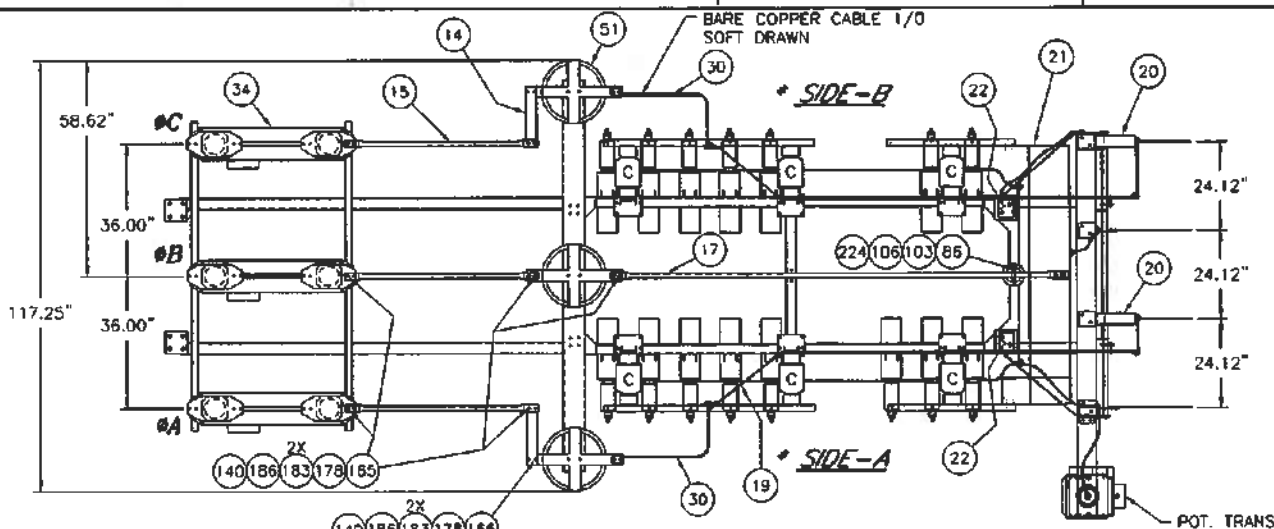
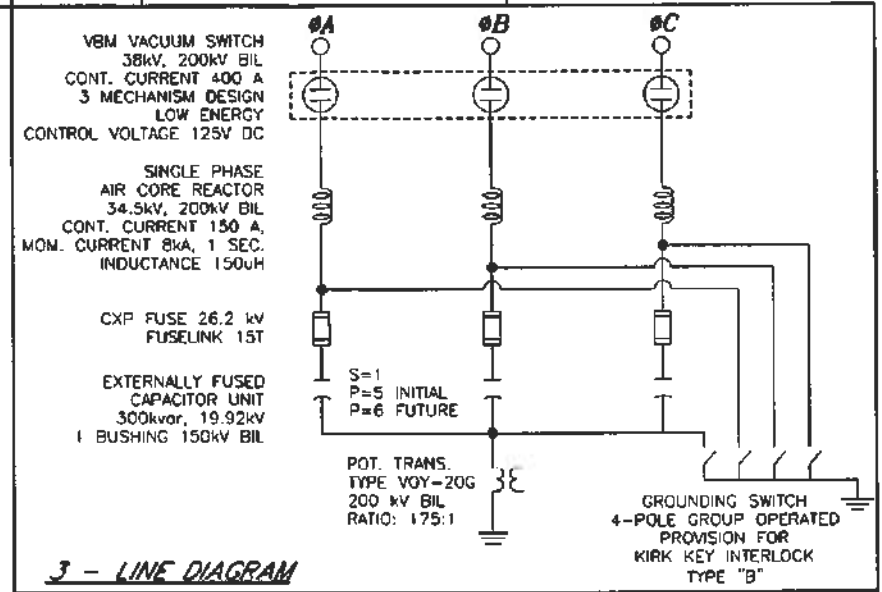


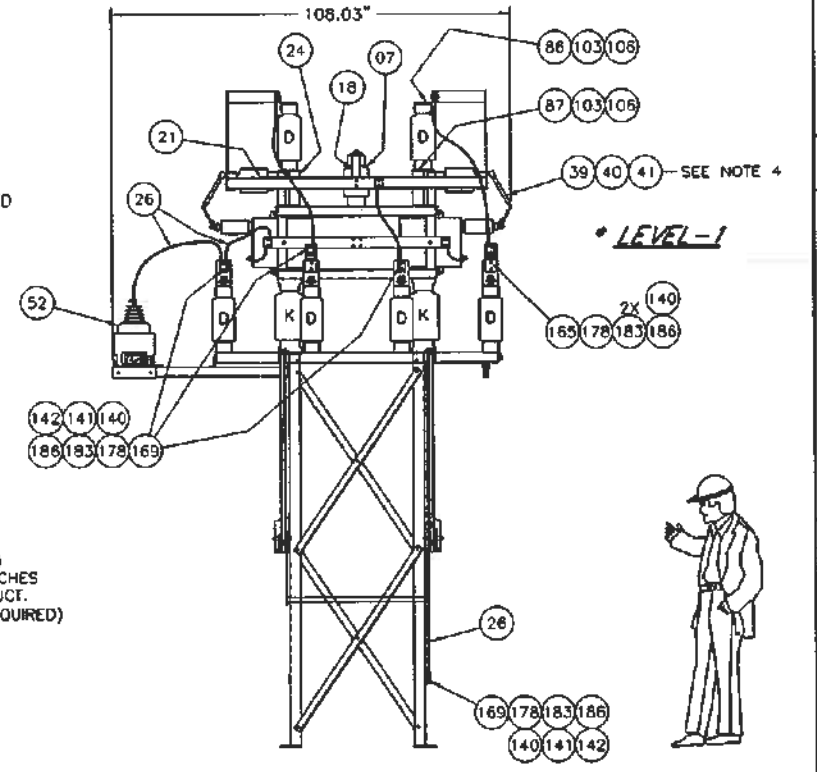
VIEW "E-E"



SECTION "D-D" (ANCHOR BOLT PLAN)



3 - LINE DIAGRAM



LEVEL-1

	BOLT PENETRATION
	2-HOLE CLAMP CONNECTOR ELECTRICAL JOINTS
	FLAT WASHER
	PENETROX
	1-HOLE CLAMP CONNECTOR ELECTRICAL JOINTS
	BOLT WASHER
	LOCK WASHER
	NUT
	ELECTRICAL JOINTS
	NON-ELECTR. JOINTS
	K TR-234 HS 34.5 200
	D TR-210 SS 34.5 200
	C TR-208 SS 23 150
	B TR-205 SS 15 110
	A TR-202 SS 7.5 95
	TR 4 1/4 1/4 BIL
	SS- STANDARD STRENGTH
	HS- HIGH STRENGTH
	ES- EXTRA HIGH STRENGTH
	POST TYPE INSULATORS

- NOTES:
- * REFERENCE FOR CAPACITOR POSITIONING CHART 2GUL303569E0010, 2GUL303569E0011, 2GUL303569E0012 AND 2GUL303569E0013 SEE INSTRUCTION MANUAL SECTION 3
 - ITEM 61 & 62 (BANK NAMEPLATE & MOUNTING SCREWS) ARE SHIPPED AS LOOSE ITEMS FOR ON SITE LOCATION BY THE CUSTOMER. DRILL #27 (#0.144")
 - 10% MORE HARDWARE SHIPPED ON SITE
 - SEE DRAWING 2GU704-0012 AND INSTRUCTION I.L.38-851-5 FOR INSTALLATION.
 - USE PENETROX (IT. 140) ON STAINLESS STEEL THREADS BETWEEN BOLT AND NUT TO AVOID GALLING.
 - POT. TRANS. (IT. 52) NOT SHOWN ON ELEVATION VIEW

BASE LOADS PER LEG	
TENSILE FORCE	3000 lbf
COMPRESSION FORCE	6900 lbf
SHEAR FORCE	1000 lbf

- INSTRUCTIONS FOR MAKING ELECTRICAL JOINTS (CONTACT SURFACE PREPARATION)
- REMOVE DIRT AND FOREIGN SUBSTANCES FROM CONTACT SURFACES.
 - ABRADE THESE SURFACES WITH WIRE BRUSH OR MEDIUM EMERY CLOTH.
 - COAT ALUMINUM CONTACT SURFACES THOROUGHLY WITH PENETROX #RK5109X-0001.
 - ASSEMBLE JOINT WITHOUT REMOVAL OF COMPOUND. EXCESSIVE MATERIAL WILL ESCAPE AS PRESSURE IS APPLIED AND MAY BE WIPED AWAY.

GENERAL TORQUE REQUIREMENTS		
NUT/BOLT SIZE	NUT	TORQUE (MIN TORQUE FT LBS)
3/8-16UNC	3/8	20-27
1/2-13UNC	1/2	45-65
5/8-11UNC	5/8	95-130
BUSHING INFO: 1/2-13UNC STD. 20-27 MM (15-20 FT LBS)		
BUSHING INFO: 3/8-16UNC STD. 27-34 MM (20-25 FT LBS)		
SITE USE INSTRUCTIONS: 20-27 MM (15-20 FT LBS) IF REQUIRED FROM 145-148; 20-27 MM (15-20 FT LBS) IF REQUIRED FROM 145-148; 20-27 MM (15-20 FT LBS) IF REQUIRED FROM 145-148.		

CUSTOMER:	FPL ENERGY
CUSTOMER ORDER No.:	U138241
SUBSTATION NAME:	BLUE SUMMIT WIND FARM
APPROX. WEIGHT:	4500 lbs WITH FUT. EXPANSION.

01 08-11-20	FINAL FOR CONSTRUCTION	P.M.	D.L.	B.G.
REVISIONS	LOC.	DESCRIPTION	BY	CHECK
ABB INC., CAPACITOR DIVISION, CANADA				
TITLE: CAP. BANK 4.5 Mvar, 34.5 kV, EXT. FUSED 200 kV BIL, 60 Hz., UNGND. WYE				
DRAFT. P.M.	DATE: 08-08-22	TOLERANCES UNLESS OTHERWISE SPECIFIED	GENERAL ± 0.25" C/C HOLES LOCATION ± 0.15" ANGLE ± 1"	
CHECK I.H.	DATE: 08-08-27	SCALE: 1/2" = 1'-0"	NO: 2GUT303569E0010	
APPR. V.D.	DATE: 08-08-28	REV	01	

NO: 2GUT303569E0010